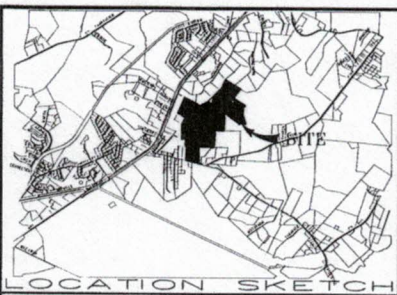


CURVE DATA

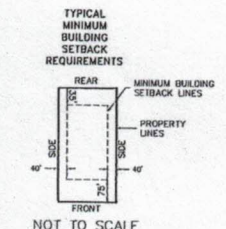
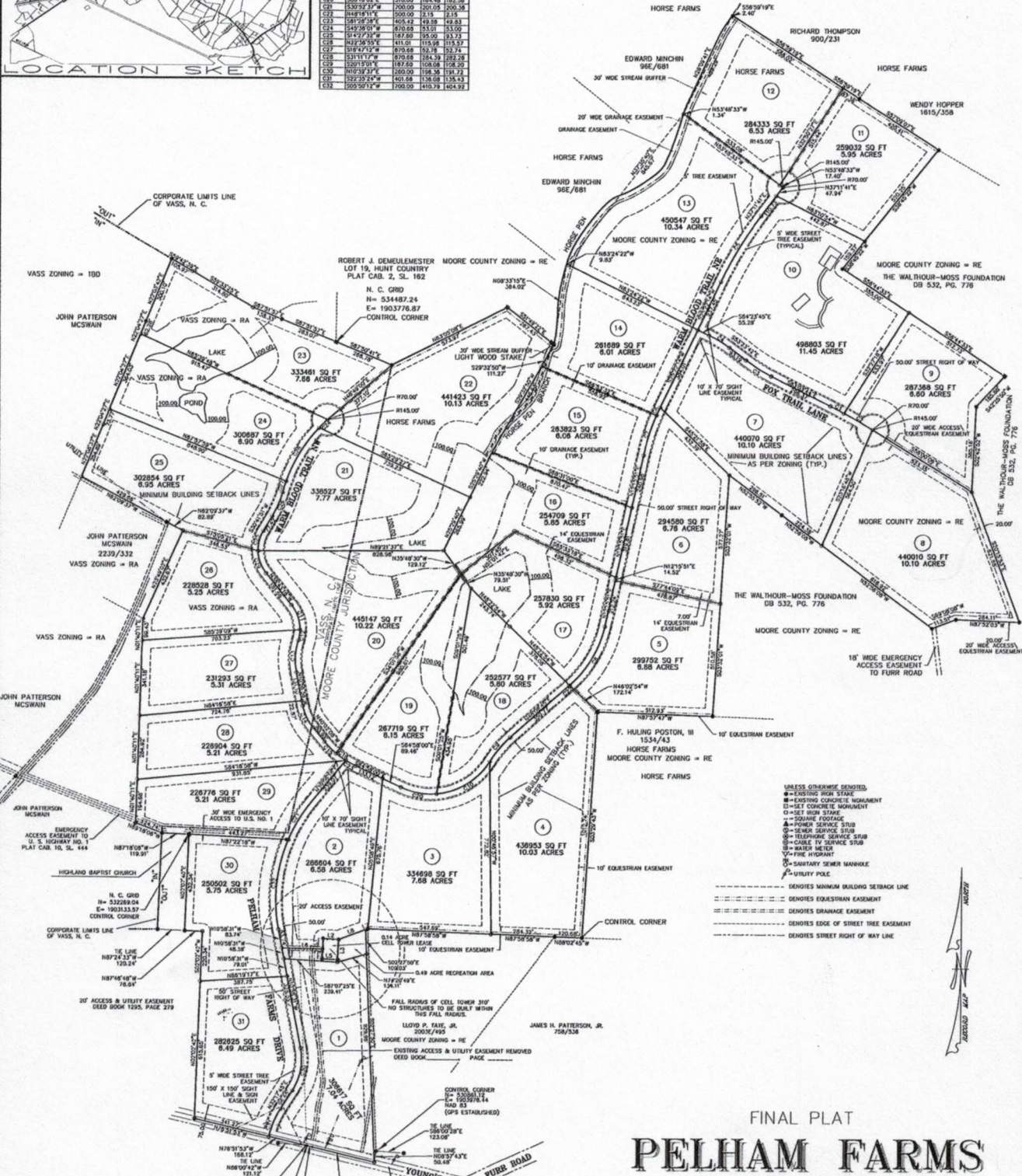
NUMBER	CH	PC	PT	PT	PT	PT	PT	PT	PT
C1	N87°41'41"W	730.15	68.34	68.34	68.34	68.34	68.34	68.34	68.34
C2	S52°29'53"W	730.15	148.34	148.34	148.34	148.34	148.34	148.34	148.34
C3	S52°29'53"W	148.34	148.34	148.34	148.34	148.34	148.34	148.34	148.34
C4	S52°29'53"W	148.34	148.34	148.34	148.34	148.34	148.34	148.34	148.34
C5	S52°29'53"W	148.34	148.34	148.34	148.34	148.34	148.34	148.34	148.34
C6	S52°29'53"W	148.34	148.34	148.34	148.34	148.34	148.34	148.34	148.34
C7	S52°29'53"W	148.34	148.34	148.34	148.34	148.34	148.34	148.34	148.34
C8	S52°29'53"W	148.34	148.34	148.34	148.34	148.34	148.34	148.34	148.34
C9	S52°29'53"W	148.34	148.34	148.34	148.34	148.34	148.34	148.34	148.34
C10	S52°29'53"W	148.34	148.34	148.34	148.34	148.34	148.34	148.34	148.34
C11	S52°29'53"W	148.34	148.34	148.34	148.34	148.34	148.34	148.34	148.34
C12	S52°29'53"W	148.34	148.34	148.34	148.34	148.34	148.34	148.34	148.34
C13	S52°29'53"W	148.34	148.34	148.34	148.34	148.34	148.34	148.34	148.34
C14	S52°29'53"W	148.34	148.34	148.34	148.34	148.34	148.34	148.34	148.34
C15	S52°29'53"W	148.34	148.34	148.34	148.34	148.34	148.34	148.34	148.34
C16	S52°29'53"W	148.34	148.34	148.34	148.34	148.34	148.34	148.34	148.34
C17	S52°29'53"W	148.34	148.34	148.34	148.34	148.34	148.34	148.34	148.34
C18	S52°29'53"W	148.34	148.34	148.34	148.34	148.34	148.34	148.34	148.34
C19	S52°29'53"W	148.34	148.34	148.34	148.34	148.34	148.34	148.34	148.34
C20	S52°29'53"W	148.34	148.34	148.34	148.34	148.34	148.34	148.34	148.34
C21	S52°29'53"W	148.34	148.34	148.34	148.34	148.34	148.34	148.34	148.34
C22	S52°29'53"W	148.34	148.34	148.34	148.34	148.34	148.34	148.34	148.34
C23	S52°29'53"W	148.34	148.34	148.34	148.34	148.34	148.34	148.34	148.34
C24	S52°29'53"W	148.34	148.34	148.34	148.34	148.34	148.34	148.34	148.34
C25	S52°29'53"W	148.34	148.34	148.34	148.34	148.34	148.34	148.34	148.34
C26	S52°29'53"W	148.34	148.34	148.34	148.34	148.34	148.34	148.34	148.34
C27	S52°29'53"W	148.34	148.34	148.34	148.34	148.34	148.34	148.34	148.34
C28	S52°29'53"W	148.34	148.34	148.34	148.34	148.34	148.34	148.34	148.34
C29	S52°29'53"W	148.34	148.34	148.34	148.34	148.34	148.34	148.34	148.34
C30	S52°29'53"W	148.34	148.34	148.34	148.34	148.34	148.34	148.34	148.34
C31	S52°29'53"W	148.34	148.34	148.34	148.34	148.34	148.34	148.34	148.34
C32	S52°29'53"W	148.34	148.34	148.34	148.34	148.34	148.34	148.34	148.34

LINE DATA

NUMBER	DIRECTION	DISTANCE
L1	S52°29'53"W	148.34
L2	N87°41'41"W	730.15
L3	S52°29'53"W	148.34
L4	S52°29'53"W	148.34
L5	S52°29'53"W	148.34
L6	S52°29'53"W	148.34
L7	S52°29'53"W	148.34
L8	S52°29'53"W	148.34
L9	S52°29'53"W	148.34
L10	S52°29'53"W	148.34
L11	S52°29'53"W	148.34
L12	S52°29'53"W	148.34
L13	S52°29'53"W	148.34
L14	S52°29'53"W	148.34
L15	S52°29'53"W	148.34
L16	S52°29'53"W	148.34
L17	S52°29'53"W	148.34
L18	S52°29'53"W	148.34
L19	S52°29'53"W	148.34
L20	S52°29'53"W	148.34
L21	S52°29'53"W	148.34
L22	S52°29'53"W	148.34
L23	S52°29'53"W	148.34
L24	S52°29'53"W	148.34
L25	S52°29'53"W	148.34
L26	S52°29'53"W	148.34
L27	S52°29'53"W	148.34
L28	S52°29'53"W	148.34
L29	S52°29'53"W	148.34
L30	S52°29'53"W	148.34
L31	S52°29'53"W	148.34
L32	S52°29'53"W	148.34



LOCATION SKETCH



NOT TO SCALE

- UNLESS OTHERWISE DENOTED
- EXISTING HIGH STAKE
- EXISTING CONCRETE MONUMENT
- SET CONCRETE MONUMENT
- SET HIGH STAKE
- SQUARE FOOTAGE
- POWER SERVICE STUB
- SEWER SERVICE STUB
- TELEPHONE SERVICE STUB
- CABLE TV SERVICE STUB
- WATER METER
- FIRE HYDRANT
- SANITARY SEWER MANHOLE
- UTILITY POLE
- DENOTES MINIMUM BUILDING SETBACK LINE
- DENOTES FORESTRY EASEMENT
- DENOTES GRASS EASEMENT
- DENOTES EDGE OF STREET TREE EASEMENT
- DENOTES STREET RIGHT OF WAY LINE

FINAL PLAT
PELHAM FARMS
 SHEET 2 OF 2
 SURVEY FOR
PEACOCK FARM, INC.
 MCNEILLS TOWNSHIP, MOORE COUNTY,
 NORTH CAROLINA
 APRIL 3, 2009 *- SCALE 1"=200'
 STEPHEN R. SHEFFIELD & ASSOCIATES, P.A.
 2233 NORTH PINEHURST STREET
 ABERDEEN, NORTH CAROLINA

